

## Technical Parameters

Model	25W Street Light	50W Street Light	75W Street Light	100W Street Light	150W Street Light
Lumen Output	3250LM 3875 LM 4250LM	6500LM 7750 LM 8500LM	9750 LM 11625LM 12750LM	13000 LM 15500LM 17000 LM	19500LM 23250LM 25500LM
CCT	3000K, 4000K, 5000K, 5700K, 6500K				
CRI	>80Ra				
Export Carton Size	540*266*165mm 3.0KG	540*266*165mm 3.0KG	623*255*150mm 4.5KG	666*295*150mm 5.6KG	736*315*150mm 7.0KG
Light Source	SAMSUNG SANAN				
System Watts	25W	50W	75W	100W	150W
Dimensions(mm)	L342x173xH68mm	L342x173xH68mm	L427x200xH74mm	L468x240xH79mm	L538x260xH80mm
Input Voltage	100-277V / 220-240V				
Power Factor	0.95				
THD	<15%				
Fixture Material	ADC12 Aluminum alloy				
Driver	MeanWell ZhiHe SOSEN Optional				
Operating Temp Range	-40°C to +50°C				
IP Rating	IP65				
Dimming Control (Optional)	0-10V 1-10V DMX DALI Optional				
Life Span	>50000Hrs(Ta=30°C @LM70)				
Light Distributor Options	60D 90D	T3-M	T3-S	T2-M	T2-S
Certification	CB CE ROHS IP66 IK10				

## Order model

Order Part No	Power	Driver	Input Voltage	LED	Luminous Flux(lm)	CRI	Viewing Angle
UNI-SL02D-H2835-140-86	25W	SOSEN	AC100~277 50~60Hz	SAMSUNG	3250lm( <b>130</b> lm/w)	80+	TI, TII, TIII, TIV, TV
UNI-SL02D-H2835-144-86	50W	SOSEN	AC100~277 50~60Hz	SAMSUNG	6500lm( <b>130</b> lm/w)	80+	TI, TII, TIII, TIV, TV
UNI-SL02D-H2835-216-86	75W	SOSEN	AC100~277 50~60Hz	SAMSUNG	9750lm( <b>130</b> lm/w)	80+	TI, TII, TIII, TIV, TV
UNI-SL02D-H2835-324-86	100W	SOSEN	AC100~277 50~60Hz	SAMSUNG	13000lm( <b>130</b> lm/w)	80+	TI, TII, TIII, TIV, TV
UNI-SL02D-H2835-432-86	150W	SOSEN	AC100~277 50~60Hz	SAMSUNG	19500lm( <b>130</b> lm/w)	80+	TI, TII, TIII, TIV, TV
UNI-SL02C-A2835-140-86	25W	MeanWell	AC100~277 50~60Hz	SANAN	3879lm( <b>155</b> lm/w)	80+	TI, TII, TIII, TIV, TV
UNI-SL02C-A2835-144-86	50W	MeanWell	AC100~277 50~60Hz	SANAN	7750lm( <b>155</b> lm/w)	80+	TI, TII, TIII, TIV, TV
UNI-SL02C-A2835-216-86	75W	MeanWell	AC100~277 50~60Hz	SANAN	11625lm( <b>155</b> lm/w)	80+	TI, TII, TIII, TIV, TV
UNI-SL02C-A2835-324-86	100W	MeanWell	AC100~277 50~60Hz	SANAN	15500lm( <b>155</b> lm/w)	80+	TI, TII, TIII, TIV, TV
UNI-SL02C-A2835-432-86	150W	MeanWell	AC100~277 50~60Hz	SANAN	23250lm( <b>155</b> lm/w)	80+	TI, TII, TIII, TIV, TV
UNI-SL02C-A2835-***-86	25W-150W	MeanWell	AC100~277 50~60Hz	SANAN	**** lm( <b>170</b> lm/w)	80+	TI, TII, TIII, TIV, TV
UNI-SL02F-A2835-324-DX	100W	DMX512	AC220~240 50~60Hz	SANAN	13000lm(3000-6500K)	80+	TI, TII, TIII, TIV, TV
UNI-SL02F-A2835-432-DX	150W	DMX512	AC220~240 50~60Hz	SANAN	19500lm(3000-6500K)	80+	TI, TII, TIII, TIV, TV

Address: Asian Plastic Absorption Industrial Zone, Hezhou Sunshine Industrial Zone, Xixiang, Bao'an, Shenzhen, China  
 Website: www.uniqueledlite.com E-mail: sales03@uniqueledlite.com

## Luminous Efficacy

170lm/W Ra80

155lm/W Ra80

130lm/W Ra80

## Surface treatment

High thermal conductivity composite metal powder

48 hours salt spray test qualified (GB/T 2423.17-2008)

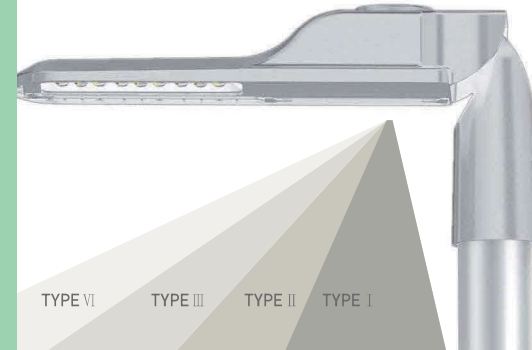
28-day solar radiation test qualified (GB/T2423.24-1995)

## 14 type of lenses



IK 10

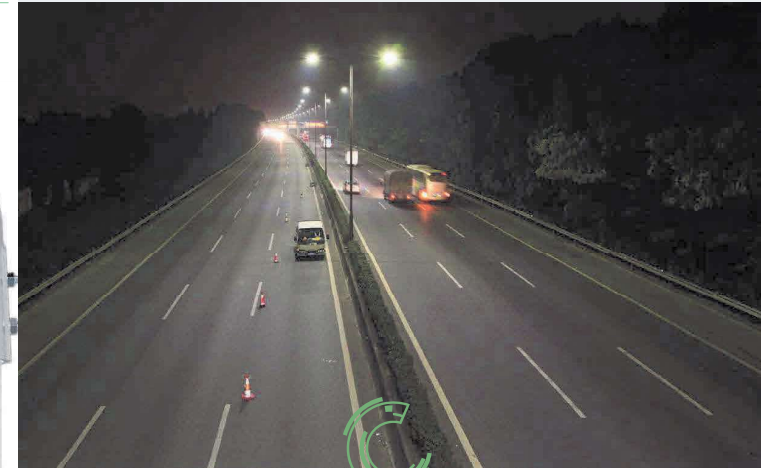
IP 66



Interchangeable  
OPTIC DESIGN

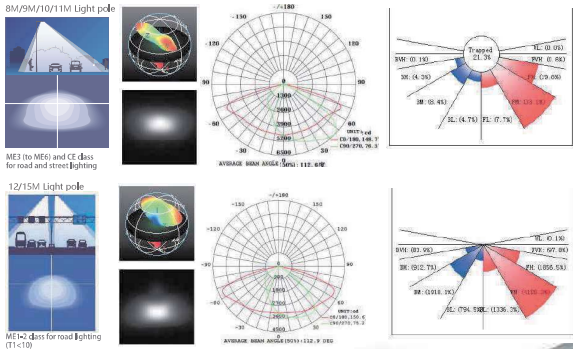


## LED Street Light-02



UNIQUE LED LIGHTING

## Photometric Diagrams

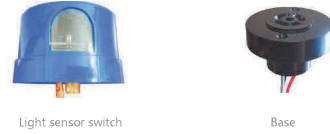


## Product design features

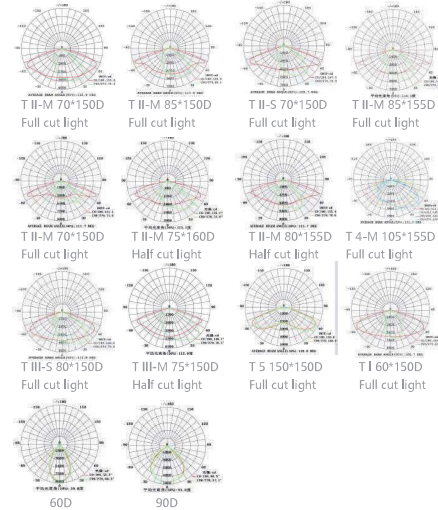
**Streamlined appearance design**  
Streamlined appearance design no dust or bird droppings.

**Surface treatment**  
High thermal conductivity composite metal powder to be used on surface. It has better anti-corrosion, anti-ultraviolet, and heat dissipation performance.

### Sensor mount interface



### 14 type lens options

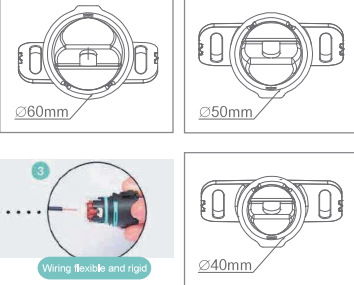


### Spirit level

The horizontal bead is in the middle position during installation.

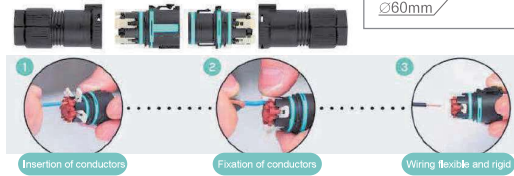


### Mounting shaft



### Wiring toolless

Screw-less quick  
Screw-less terminations wiring

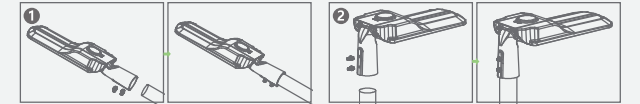


## Optional Installation

### Optional accessories



## Installation



## Dimension

